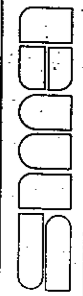


APPENDIX T:

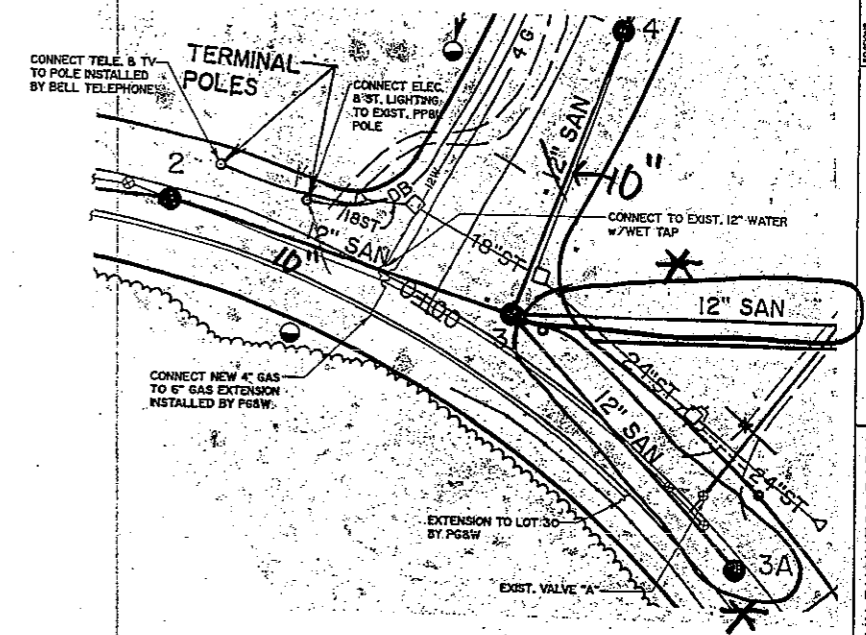
Existing Conveyance System Mapping



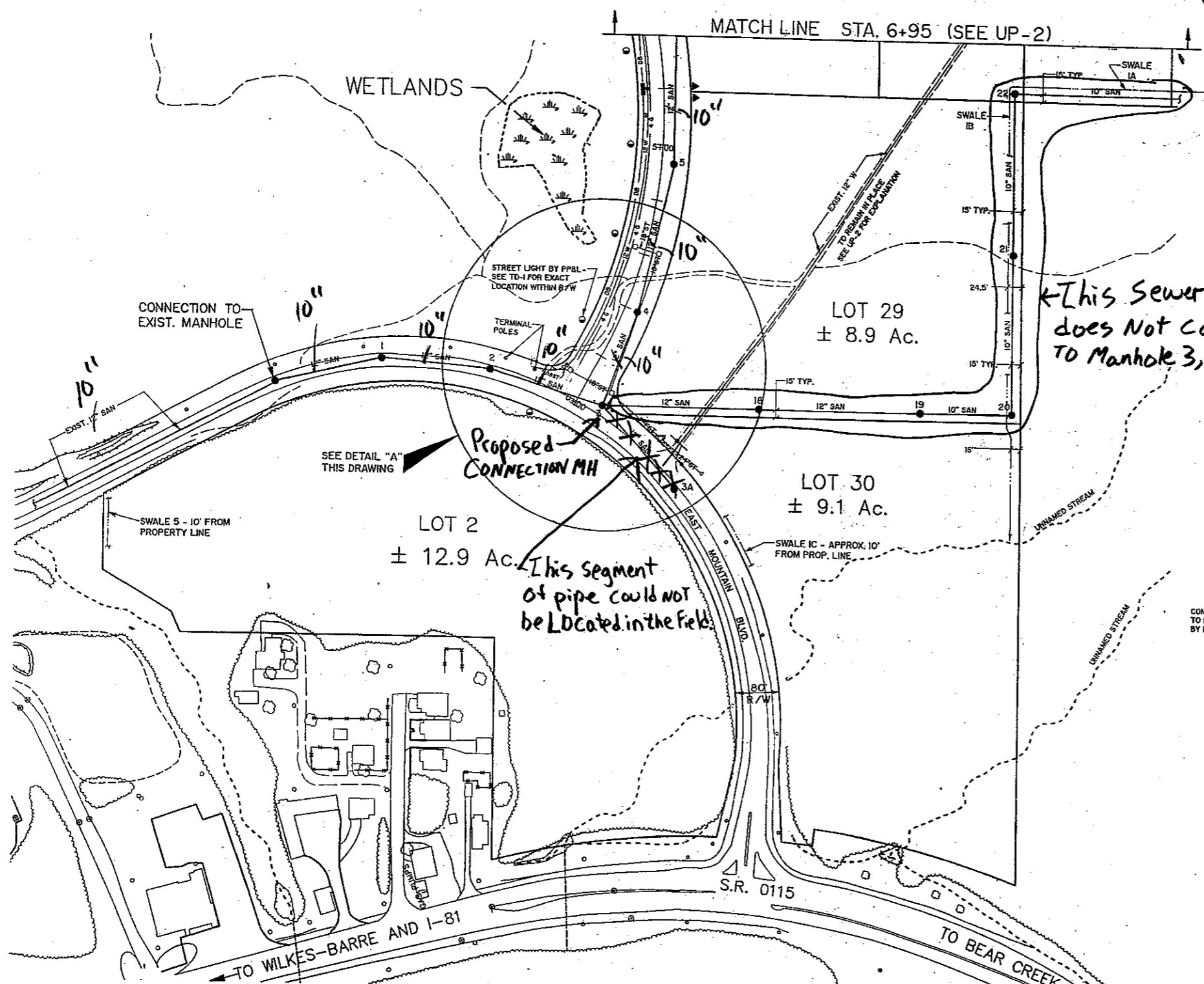
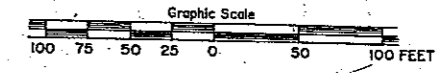
UTILITY PLAN
LEGEND

- 1 SANITARY MANHOLE & NUMBER
- 12 SAN SANITARY SEWER & SIZE
- 1 STORM INLET & NUMBER
- 36 ST STORM SEWER & SIZE
- COMBINATION ELECTRIC, TELEPHONE & TV STATION
- DB- ELEC., TELE. & TV DUCT BANK - SEE TD-1
- 12 W- WATER MAIN & SIZE
- ⊗ GATE VALVE
- ⊙ FIRE HYDRANT
- 4 G- GAS MAIN & SIZE
- ▲ UTILITY SERVICES LOCATION - SEE TD-1 FOR SIZE & TYPE OF UTILITIES
- ⊙ STREET LIGHT - HPS - 9,500 LUMEN
- STREET LIGHT - HPS - 16,000 LUMEN

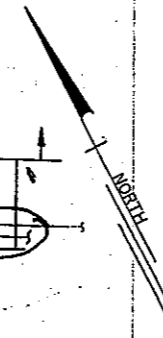
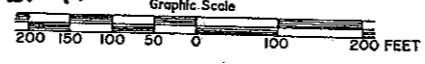
NOTE: FIRE HYDRANT @ STA. 5+50.
12" GATE VALVE @ STATIONS 0+02 (WET TAP) & 6+00.



DETAIL "A"
*SEE 1"=100' SCALE PLAN TO LEFT

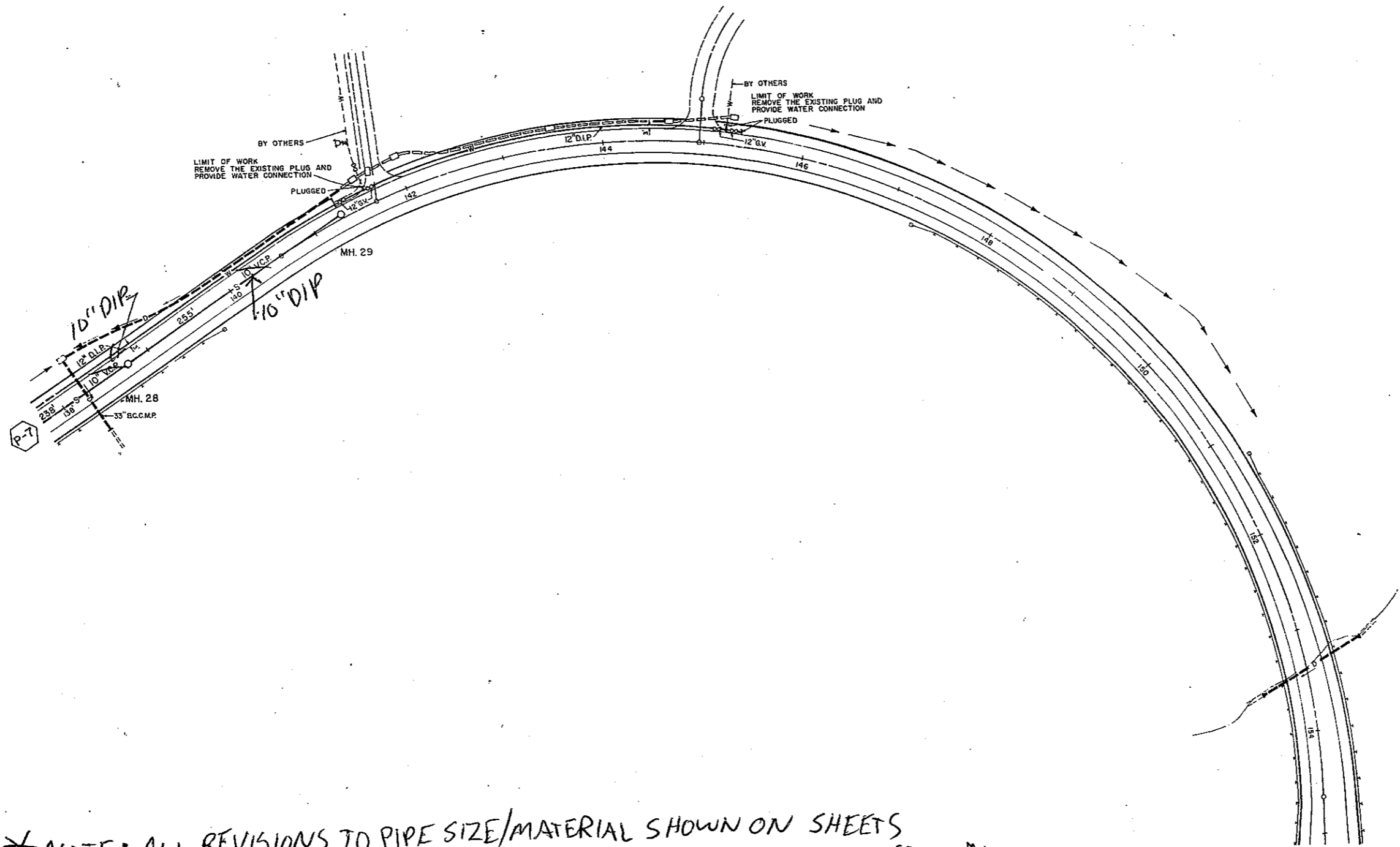
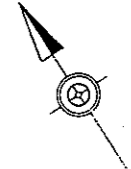


NOTE: ALL REVISIONS SHOWN ON THIS PLAN ARE BASED ON THE RESULTS OF A FIELD INVESTIGATION COMPLETED BY REILLY ASSOCIATES ON 3-2-10.



B.M. Elev. 1037.92
 R.R. Spike in 16" Oak Tree
 71' Lt. Sta. 145+00

B.M. Elev. 1002.79
 R.R. Spike in 24" Oak Tree
 103' Rt. Sta. 154+65.40



*NOTE: ALL REVISIONS TO PIPE SIZE/MATERIAL SHOWN ON SHEETS
 P-9,7,5,3 ARE BASED ON THE RESULTS OF A FIELD INVESTIGATION
 COMPLETED BY REILLY ASSOC. ON 3-2-10.

PRELIMINARY

FOR PROFILE SEE SHEET P-10

REVISIONS

SEAL	SEAL
------	------

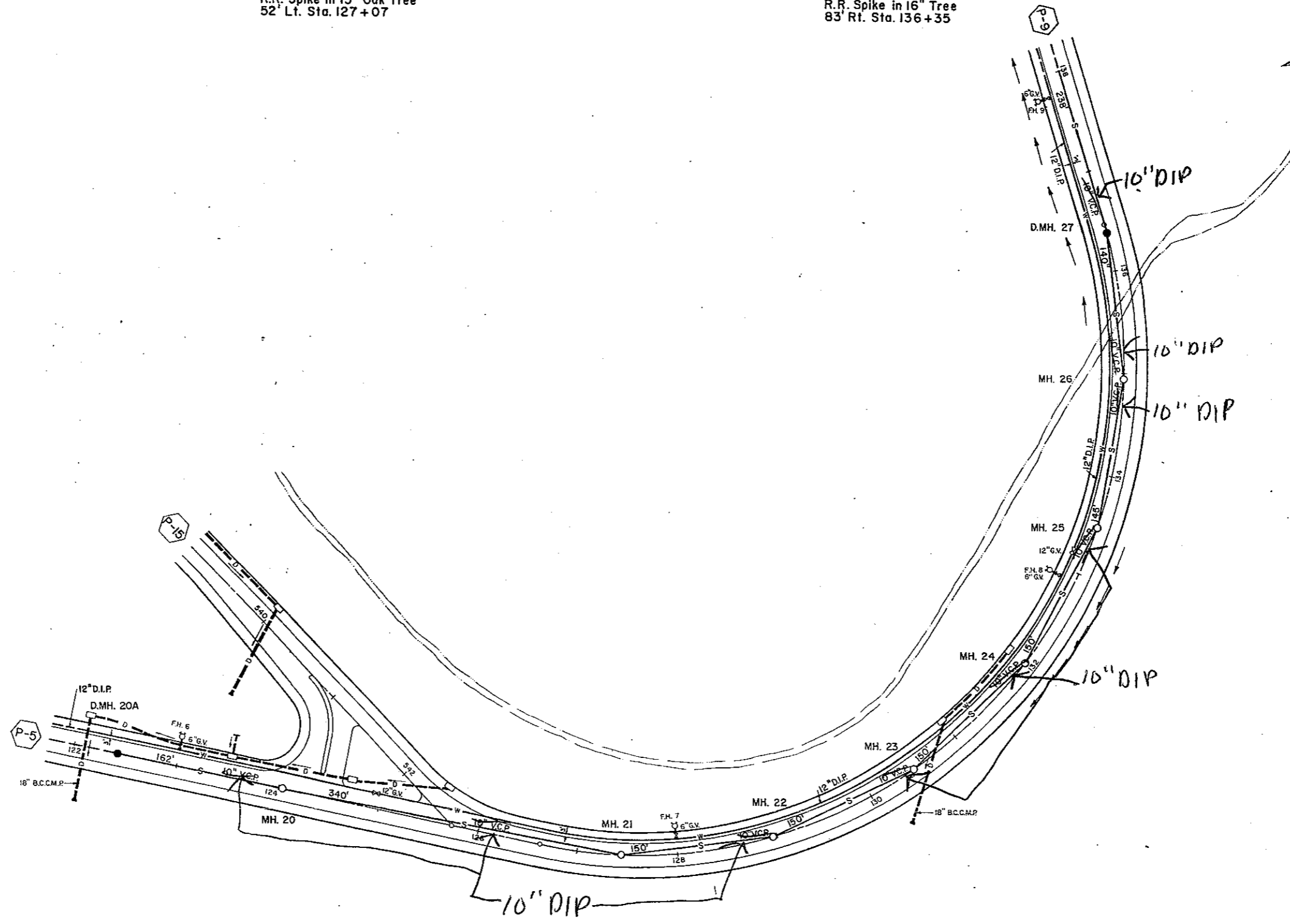
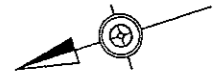
A. L. WIESENBERGER ASSOCIATES, INC.
 ARCHITECTS • ENGINEERS • PLANNERS
 ALLENTOWN, PENNSYLVANIA

UNITED HEALTH AND HOSPITAL SERVICES, INC.
 REGIONAL HEALTH CARE CENTER
 PLAINS TOWNSHIP LUZERNE COUNTY
 PENNSYLVANIA

MAIN ACCESS ROAD SANITARY SEWER & WATER PLAN		
COMM. NO. 02036	DRAWN	DRAWING NO.
DATE	CHECKED	P-9
SCALE 1" = 50'	SHEET	

B.M. Elev. 999.58
 R.R. Spike in 15" Oak Tree
 52' Lt. Sta. 127+07

B.M. Elev. 1004.08
 R.R. Spike in 16" Tree
 83' Rt. Sta. 136+35



PRELIMINARY

FOR PROFILE SEE SHEET P-8

REVISIONS

SEAL	SEAL
------	------

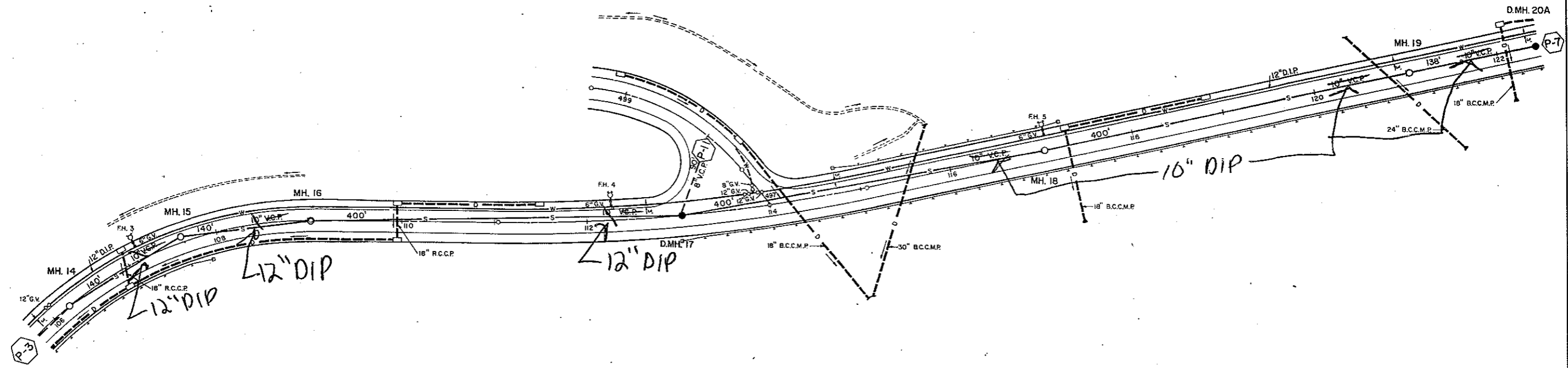
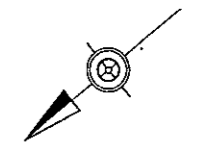
A. L. WIESENBERGER ASSOCIATES, INC.
 ARCHITECTS · ENGINEERS · PLANNERS
 ALLENTOWN, PENNSYLVANIA

UNITED HEALTH AND HOSPITAL SERVICES, INC.
 REGIONAL HEALTH CARE CENTER
 PLAINS TOWNSHIP LUZERNE COUNTY
 PENNSYLVANIA

MAIN ACCESS ROAD SANITARY SEWER & WATER PLAN	
COMM. NO. 02036	DRAWN
DATE	CHECKED
SCALE 1" = 50'	SHEET

P-7

B.M. Elev. 903.48
 R.R. Spike in 10" Oak Tree
 48' Lt. Sta. 108+96

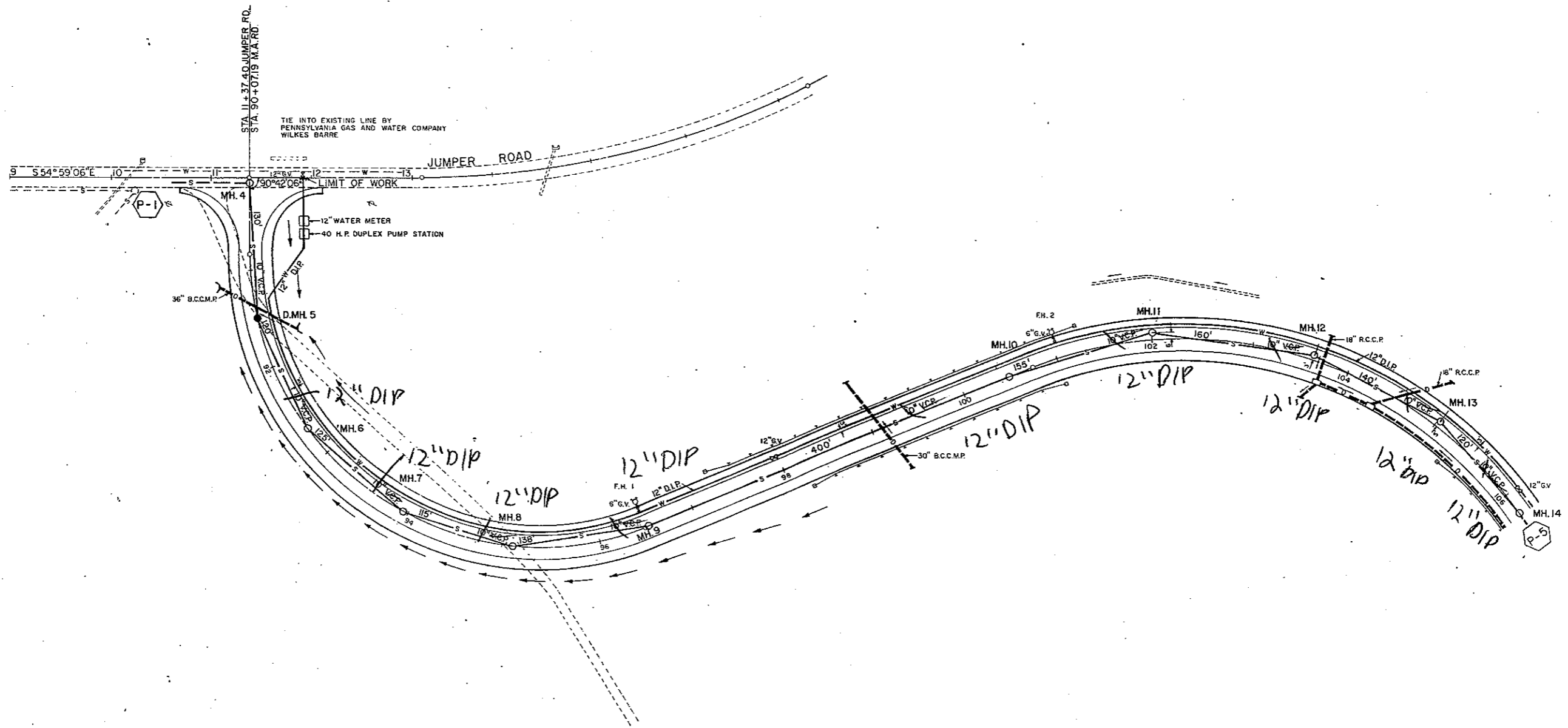
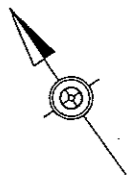


PRELIMINARY

FOR PROFILE SEE SHEET P-6

REVISIONS		A. L. WIESENBERGER ASSOCIATES, INC. ARCHITECTS · ENGINEERS · PLANNERS ALLENTOWN, PENNSYLVANIA	UNITED HEALTH AND HOSPITAL SERVICES, INC. REGIONAL HEALTH CARE CENTER PLAINS TOWNSHIP LUZERNE COUNTY PENNSYLVANIA	MAIN ACCESS ROAD SANITARY SEWER & WATER PLAN		
SEAL	SEAL			COMM. NO. 02036	DRAWN CHECKED	DRAWING NO. P-5

B.M. Elev. 840.89
 R.P. Spike
 56' Ri. of P.C. Sta. 100+73.44



PRELIMINARY

FOR PROFILE SEE SHEET P-4

REVISIONS

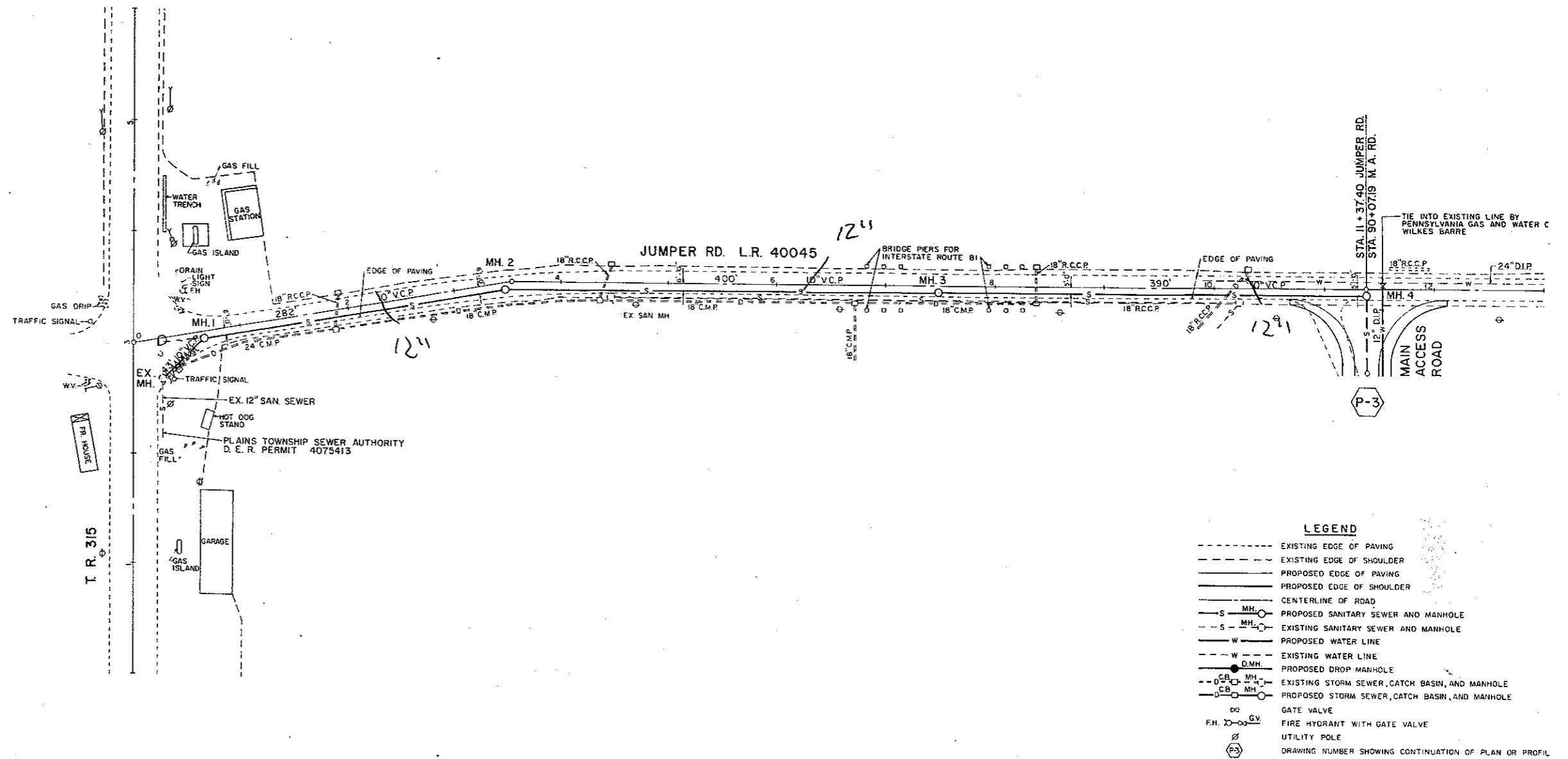
A. L. WIESENBERGER ASSOCIATES, INC.
 ARCHITECTS • ENGINEERS • PLANNERS
 ALLENTOWN, PENNSYLVANIA

UNITED HEALTH AND HOSPITAL SERVICES, INC.
 REGIONAL HEALTH CARE CENTER
 PLAINS TOWNSHIP LUZERNE COUNTY
 PENNSYLVANIA

MAIN ACCESS ROAD SANITARY SEWER & WATER PLAN	
COMM. NO. 02036	DRAWN
DATE	CHECKED
SCALE HOR. 1" = 50'	SHEET

P-3

B.M. Elev. 818.24
 R.R. Spike in P.P. & L. Pole #53215



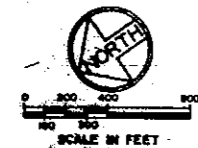
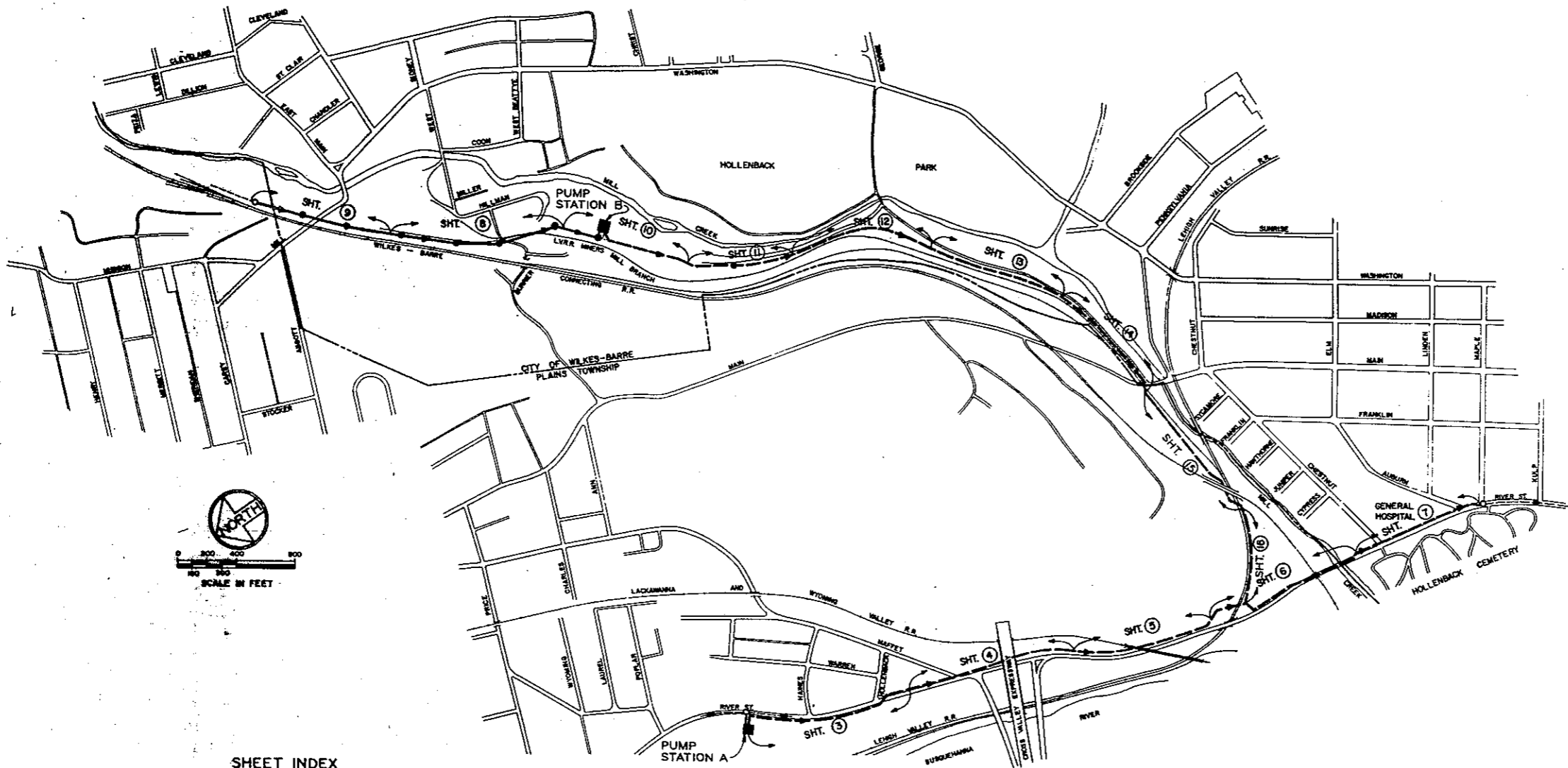
PREL

FOR PROFILE SEE SHEET P-2

A. L. WIESENBERGER ASSOCIATES, INC.
 ARCHITECTS · ENGINEERS · PLANNERS
 66 BENTON PENNSYLVANIA

UNITED HEALTH AND HOSPITAL SERVICES, INC.
 REGIONAL HEALTH CARE CENTER
 PLAINS TOWNSHIP LUZERNE COUNTY
 PENNSYLVANIA

JU SANITARY SE	
COMM. NO.	DRAWN
02036	
DATE	CHECKED
SCALE	SHEET
1" = 50'	



- GENERAL LEGEND**
- PROPOSED MANHOLE
 - PROPOSED DROP MANHOLE
 - PROPOSED SANITARY SEWER
 - PROPOSED FORCE MAIN
 - SURVEY BASE LINE
 - EXIST. MANHOLE
 - 8" San EXIST. SANITARY SEWER
 - 24" ST EXIST. STORM SEWER (30" & SMALLER)
 - 36" ST EXIST. STORM SEWER (36" & LARGER)
 - EXIST. SINGLE INLET
 - EXIST. DOUBLE INLET
 - PP POWER POLE (W/GUY)
 - FH FIRE HYDRANT
 - W.V. WATER VALVE
 - W.M. WATER METER
 - G.M. GAS METER
 - G.V. GAS VALVE
 - 12" TREE & SIZE
 - HEDGES OR SHRUBS
 - FENCE
 - W-W WATER MAIN & SIZE
 - G-G GAS MAIN & SIZE
 - T-T UNDERGROUND TELEPHONE CABLE
 - E-E UNDERGROUND ELECTRIC CABLE
 - PROPERTY LINE
 - IP IRON PIPE
 - + STREET SIGN OR POST
 - CONC. MONUMENT
 - ⊙ B.H.#1 BORE HOLE

SHEET INDEX

SHEET NO.	SHEET TITLE
1	COVER SHEET
2	LOCATION MAP, SHEET INDEX & GENERAL LEGEND
3	FORCE MAIN A - PLAN & PROFILE - STA. 1 + 00 TO STA. 12 + 50
4	FORCE MAIN A - PLAN & PROFILE - STA. 12 + 50 TO STA. 24 + 00
5	FORCE MAIN A - PLAN & PROFILE - STA. 24 + 00 TO STA. 34 + 50
6	FORCE MAIN A - PLAN & PROFILE - STA. 34 + 50 TO STA. 46 + 50
7	FORCE MAIN A - PLAN & PROFILE - STA. 46 + 50 TO STA. 54 + 60 & DETAILS
8	INTERCEPTOR SEWER - PLAN & PROFILE - STA. 11 + 00-STA. 22 + 50
9	INTERCEPTOR SEWER - PLAN & PROFILE - STA. 22 + 50 TO STA. 31 + 70
10	PLAN & PROFILE - INTERCEPTOR SEWER - STA. 8 + 35 TO STA. 11 + 00 FORCE MAIN B - STA. 4 + 06 TO STA. 8 + 50
11	FORCE MAIN B - PLAN & PROFILE - STA. 8 + 50 TO STA. 18 + 00
12	FORCE MAIN B - PLAN & PROFILE - STA. 18 + 00 TO STA. 28 + 00
13	FORCE MAIN B - PLAN & PROFILE - STA. 28 + 00 TO STA. 37 + 50
14	FORCE MAIN B - PLAN & PROFILE - STA. 37 + 50 TO STA. 46 + 75
15	FORCE MAIN B - PLAN & PROFILE - STA. 46 + 75 TO STA. 58 + 00
16	FORCE MAIN B - PLAN & PROFILE - STA. 58 + 00 TO STA. 63 + 75
17	SEWER CONSTRUCTION DETAILS

LOCATION MAP

SHEET NO.	SHEET TITLE
18	SITE LOCATION & DEVELOPMENT PLAN - PUMPING STATION A
19	SITE LOCATION & DEVELOPMENT PLAN - PUMPING STATION B
20	PUMPING STATIONS A & B - PLANS & DETAILS
21	PUMPING STATIONS A & B - SECTIONS
22	PLANS & ELEVATIONS - ARCHITECTURAL
23	STAIR SECTIONS & DETAILS - ARCHITECTURAL
24	ARCHITECTURAL DETAILS
25	PUMPING STATIONS A & B - STRUCTURAL PLANS
26	PUMPING STATIONS A & B - STRUCTURAL SECTIONS
27	PUMPING STATIONS A & B - STRUCTURAL ROOF PLAN & SECTIONS
28	STRUCTURAL NOTES & DETAILS
29	VENTILATION & GAS PIPING - PUMPING STATIONS A & B
30	DETAILS, SYMBOLS & SCHEDULES - VENTILATION & GAS PIPING
31	PUMPING STATION A - PLANS - ELECTRICAL
32	PUMPING STATION B - PLANS - ELECTRICAL
33	TYPICAL SINGLE LINE WIRING DIAGRAM & SCHEMATICS
34	TELEMETERING & SECTIONS - ELECTRICAL

LIST OF UTILITY OWNERS

Pennsylvania Gas & Water Co.	39 Public Square Wilkes-Barre, PA. 18711	717-824-8711
Bell Telephone Co. of Pennsylvania	39 Public Square Wilkes-Barre, PA. 18711	717-824-3513
Pennsylvania Power & Light Co.	344 S. Poplar St. Hazleton, PA. 18201	717-824-9811
Wyoming Valley Sanitary Authority	1000 Wilkes-Barre St. Wilkes-Barre, PA.	717-825-3416

ABBREVIATIONS

V.C.P.	VITRIFIED CLAY PIPE
R.C.P.	REINFORCED CONCRETE PIPE
C.M.P.	CORRUGATED METAL PIPE
C.I.P.	CAST IRON PIPE
D.I.P.	DUCTILE IRON PIPE
T.B.M.	TEMPORARY BENCH MARK



PLAINS TOWNSHIP SEWER AUTHORITY
PLAINS TOWNSHIP, PENNSYLVANIA
SEWERAGE FACILITIES

LOCATION MAP, SHEET INDEX
& GENERAL LEGEND

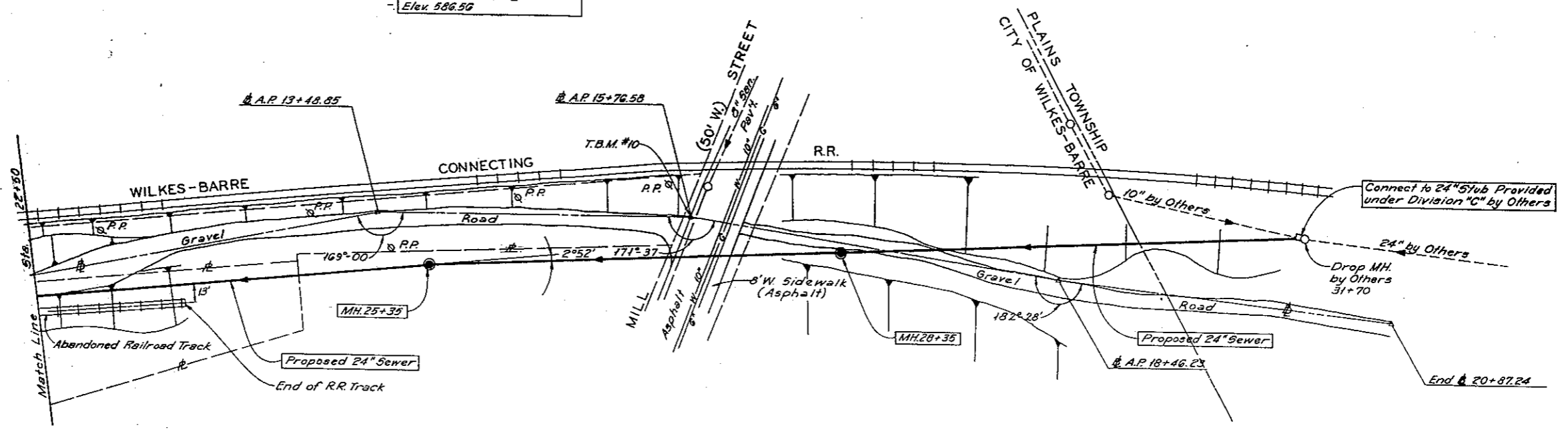
DESIGNED BY: F.E.R.
DATE: May 1976
CHECKED BY: J.M.S.
APPROVED BY: W.G.S.

CONSOL, TOWNSEND
& ASSOCIATES
CONSULTING ENGINEERS
OSCAR, I.L. ST. LOUIS, MO.

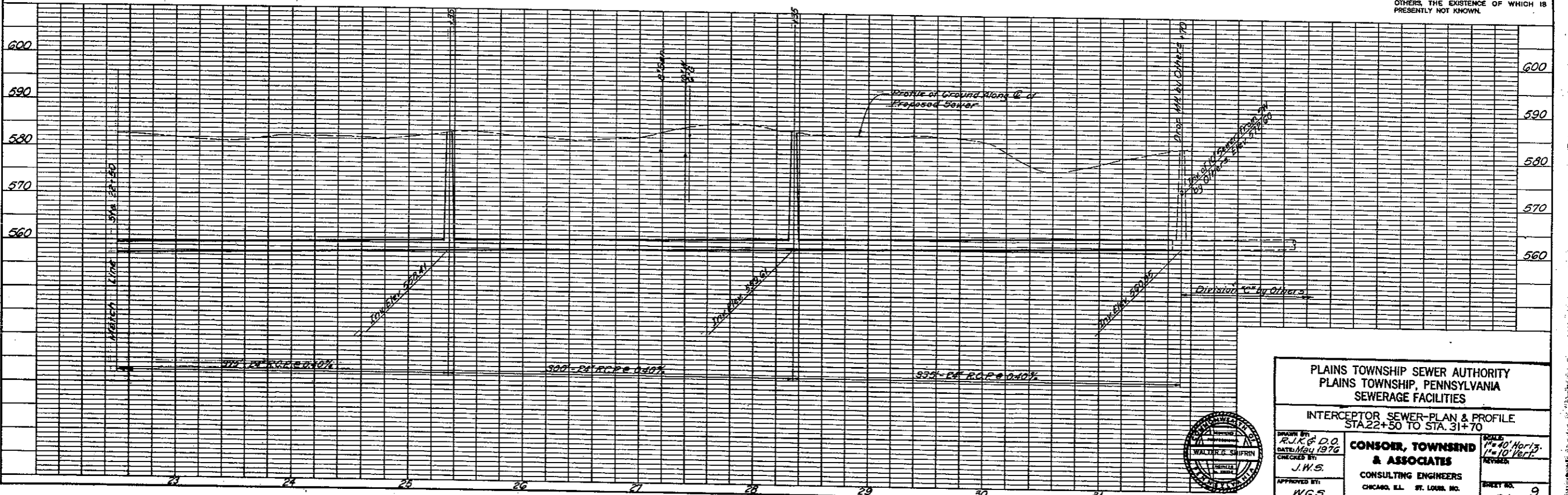
SCALE: As Shown
SHEET NO. 2
OF 34



T.B.M. #10 - Top of P-K Nail @
L.P. 15+76.58 on E.
Elev. 586.56



NOTE:
UNDERGROUND FACILITIES, STRUCTURES AND UTILITIES HAVE BEEN PLOTTED FROM AVAILABLE SURVEYS AND RECORDS AND, THEREFORE, THEIR LOCATIONS MUST BE CONSIDERED APPROXIMATE ONLY. THERE MAY BE OTHERS, THE EXISTENCE OF WHICH IS PRESENTLY NOT KNOWN.



PLAN
DATE
BY
REVISIONS
NO.
DATE
BY
REVISIONS
NO.
DATE
BY
REVISIONS
NO.

PROFILE
DATE
BY
REVISIONS
NO.
DATE
BY
REVISIONS
NO.
DATE
BY
REVISIONS
NO.

PLAINS TOWNSHIP SEWER AUTHORITY
PLAINS TOWNSHIP, PENNSYLVANIA
SEWERAGE FACILITIES

INTERCEPTOR SEWER-PLAN & PROFILE
STA. 22+50 TO STA. 31+70

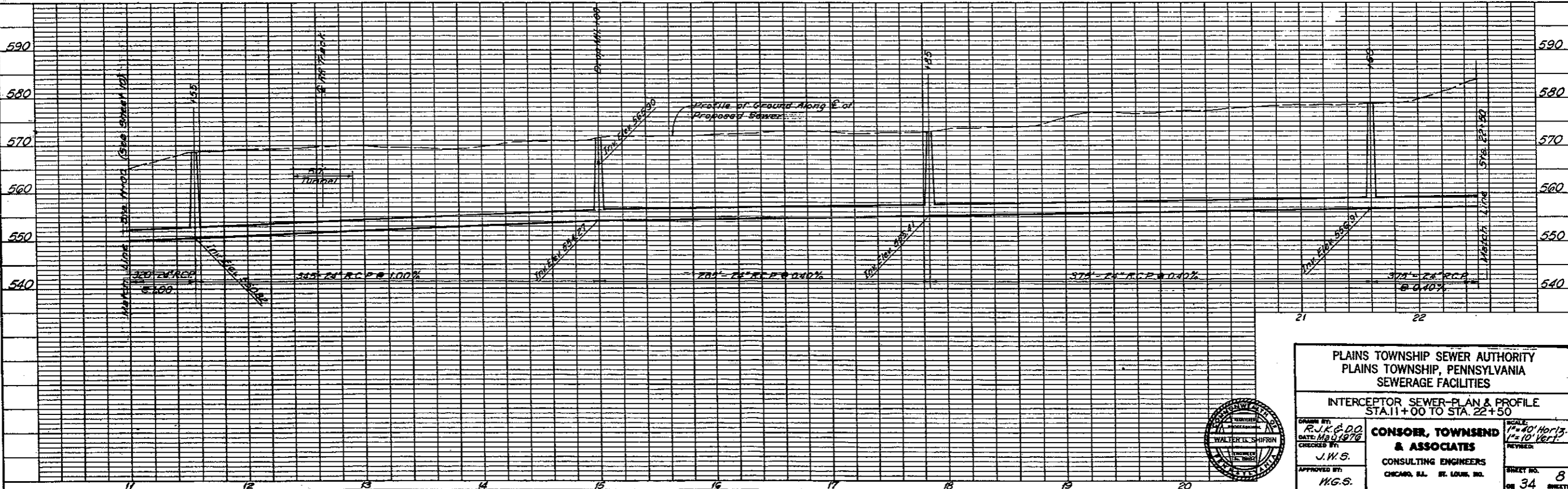
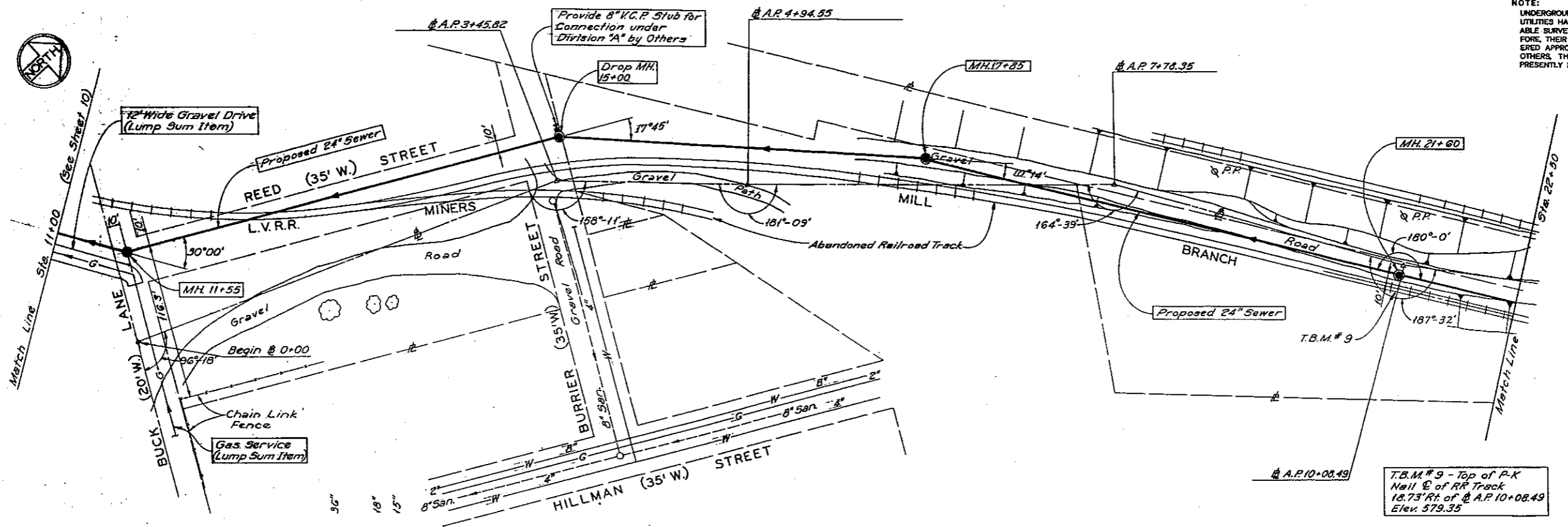
DESIGNED BY: R.J.K. & D.O. DATE: May 1976		SCALE: 1" = 40' Horiz. 1" = 10' Vert.
CHECKED BY: J.W.S.		REVISIONS:
APPROVED BY: W.G.S.	CONSOR, TOWNSEND & ASSOCIATES CONSULTING ENGINEERS CHICAGO, ILL. ST. LOUIS, MO.	SHEET NO. 34 OF 34 SHEETS



DATE	
BY	
REVISIONS	
NO.	
DATE	
BY	
REVISIONS	
NO.	
DATE	
BY	
REVISIONS	
NO.	

DATE	
BY	
REVISIONS	
NO.	
DATE	
BY	
REVISIONS	
NO.	
DATE	
BY	
REVISIONS	
NO.	

NOTE:
UNDERGROUND FACILITIES, STRUCTURES AND UTILITIES HAVE BEEN PLOTTED FROM AVAILABLE SURVEYS AND RECORDS AND, THEREFORE, THEIR LOCATIONS MUST BE CONSIDERED APPROXIMATE ONLY. THERE MAY BE OTHERS, THE EXISTENCE OF WHICH IS PRESENTLY NOT KNOWN.



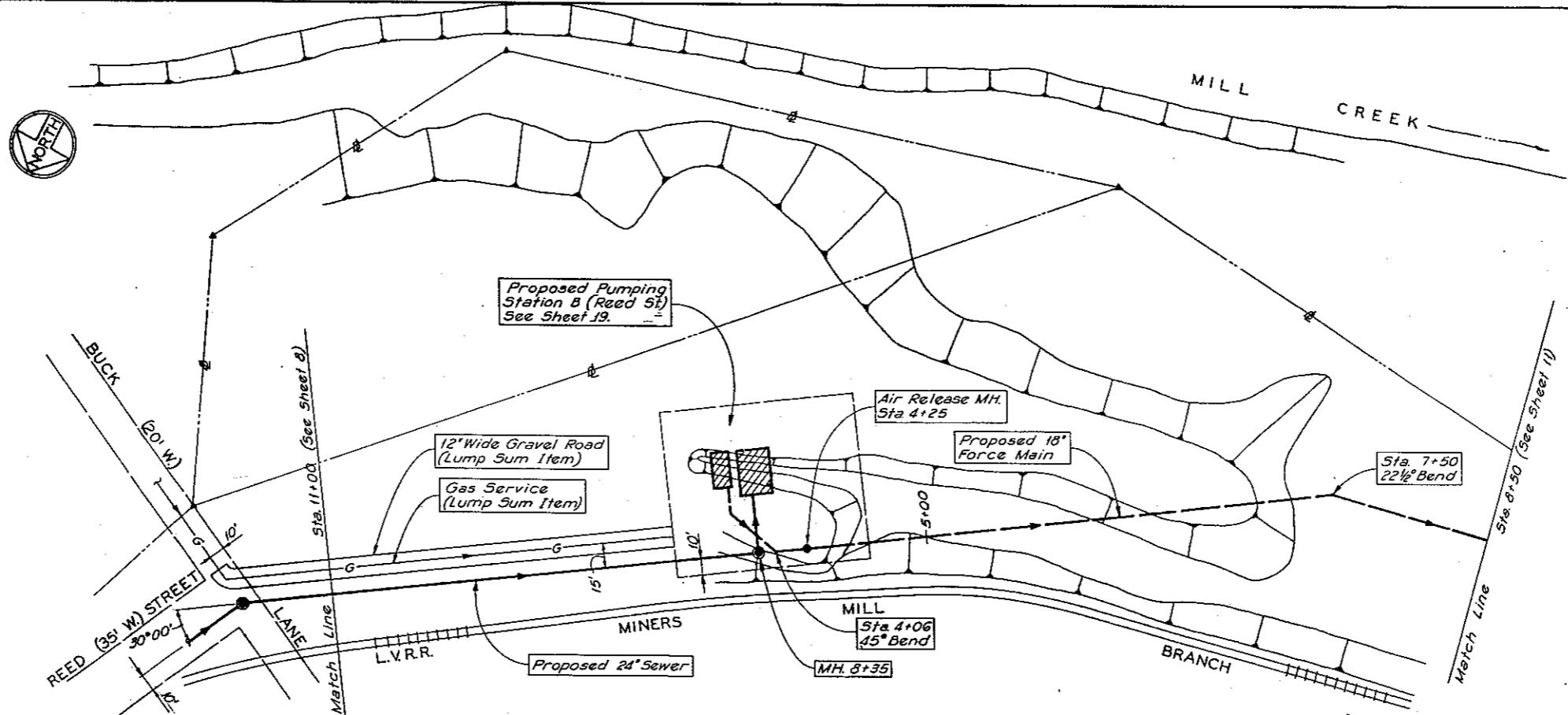
PLAINS TOWNSHIP SEWER AUTHORITY
PLAINS TOWNSHIP, PENNSYLVANIA
SEWERAGE FACILITIES

INTERCEPTOR SEWER-PLAN & PROFILE
STA. 11+00 TO STA. 22+50

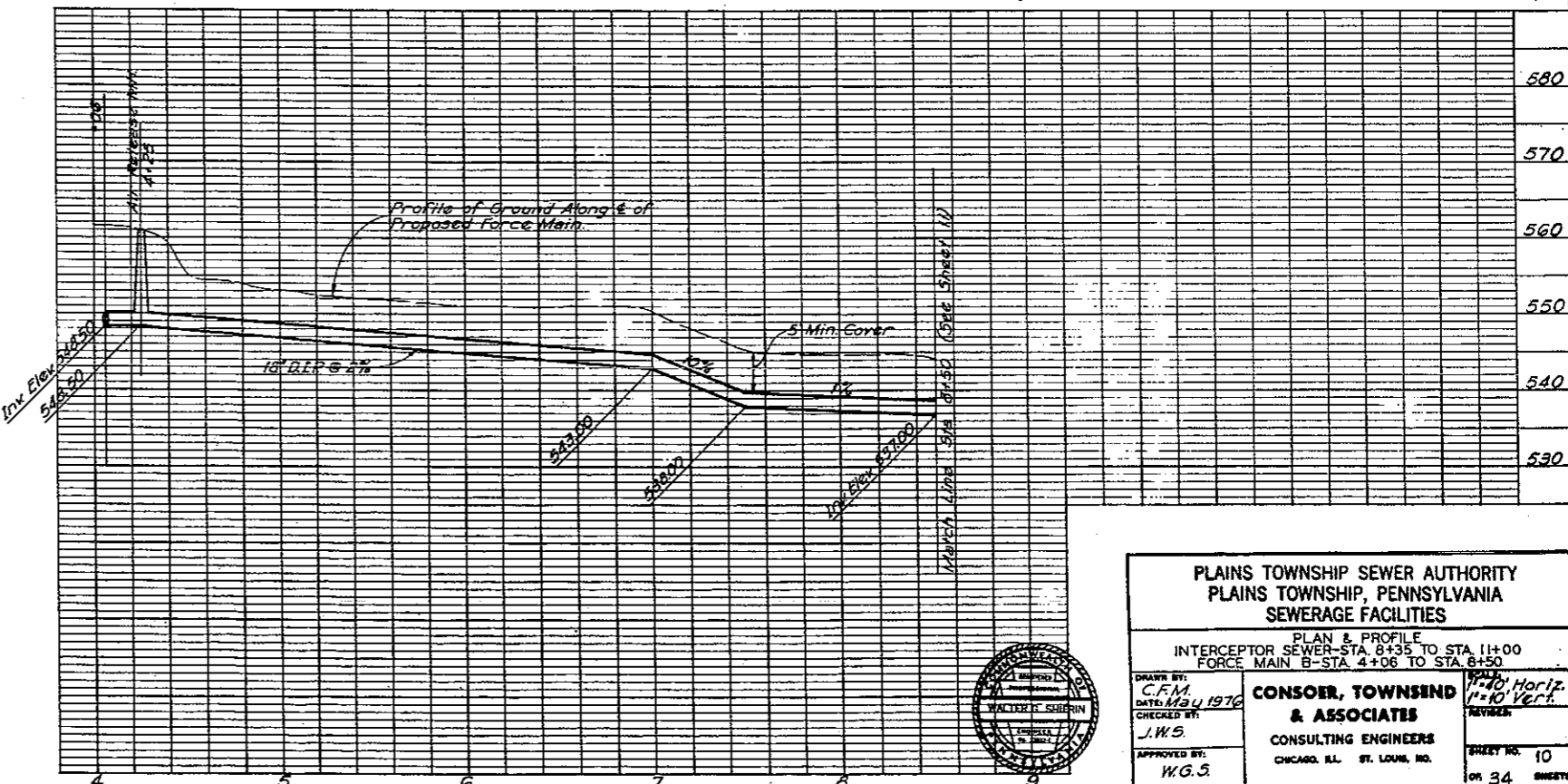
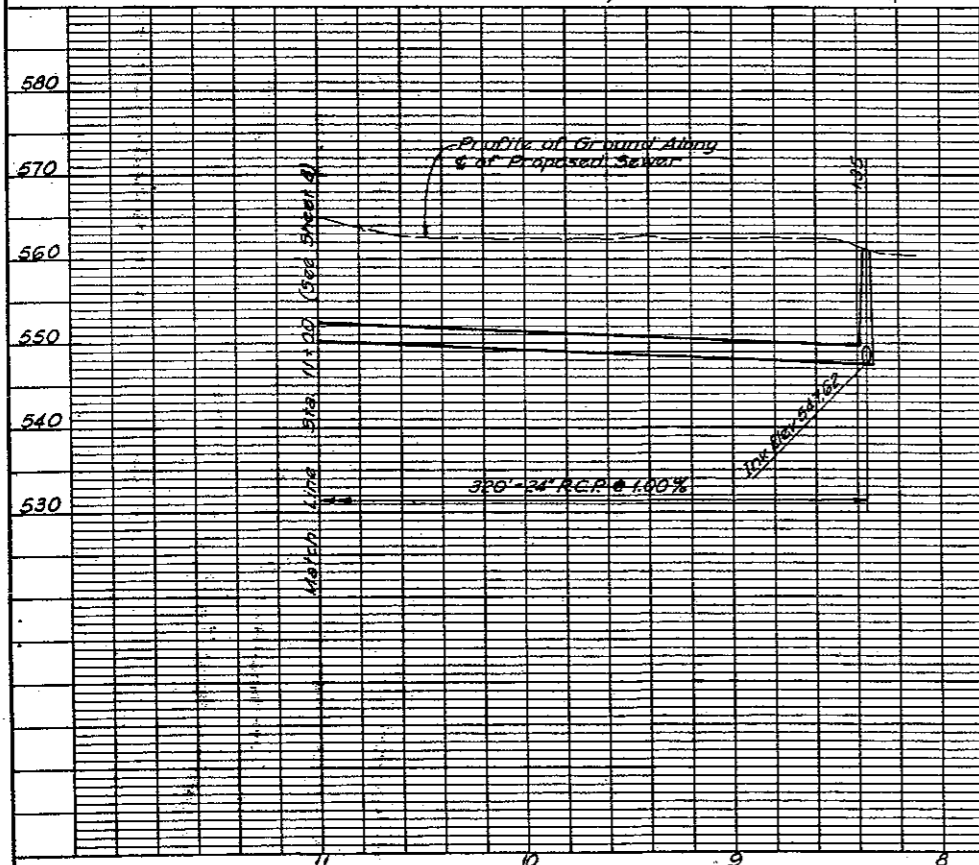
SCALE: 1" = 40' Horiz.
1" = 10' Vert.

CONSOER, TOWNSEND & ASSOCIATES
CONSULTING ENGINEERS
CHICAGO, ILL. ST. LOUIS, MO.

75136



NOTE:
 UNDERGROUND FACILITIES, STRUCTURES AND UTILITIES HAVE BEEN PLOTTED FROM AVAILABLE SURVEYS AND RECORDS AND, THEREFORE, THEIR LOCATIONS MUST BE CONSIDERED APPROXIMATE ONLY. THERE MAY BE OTHERS, THE EXISTENCE OF WHICH IS PRESENTLY NOT KNOWN.



PLAINS TOWNSHIP SEWER AUTHORITY
 PLAINS TOWNSHIP, PENNSYLVANIA
 SEWERAGE FACILITIES

PLAN & PROFILE
 INTERCEPTOR SEWER—STA. 8+35 TO STA. 11+00
 FORCE MAIN B—STA. 4+06 TO STA. 8+50

DRAWN BY: C.F.M.
 DATE: 11/24/1976
 CHECKED BY: J.W.S.
 APPROVED BY: W.G.S.

CONSOER, TOWNSIND & ASSOCIATES
 CONSULTING ENGINEERS
 CHICAGO, ILL. ST. LOUIS, MO.

1" = 10' Horiz.
 1" = 10' Vert.

SHEET NO. 10
 OF 34 SHEETS